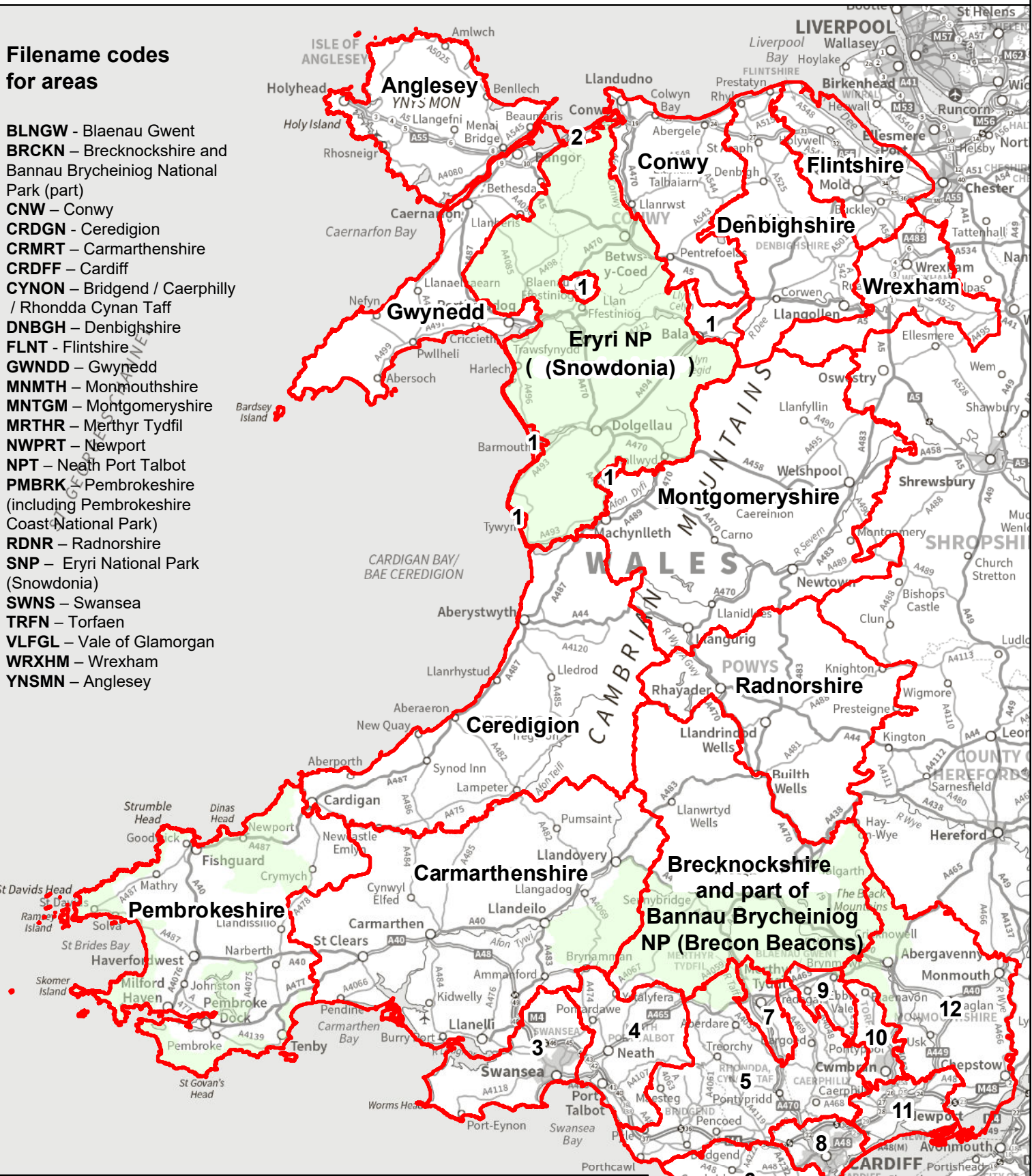


Filename codes for areas

- BLNGW** - Blaenau Gwent
- BRCKN** - Brecknockshire and Bannau Brycheiniog National Park (part)
- CNW** - Conwy
- CRDGN** - Ceredigion
- CRMRT** - Carmarthenshire
- CRDFF** - Cardiff
- CYNON** - Bridgend / Caerphilly / Rhondda Cynan Taff
- DNBGH** - Denbighshire
- FLNT** - Flintshire
- GWDDD** - Gwynedd
- MMTH** - Monmouthshire
- MNTGM** - Montgomeryshire
- MRTHR** - Merthyr Tydfil
- NWPRT** - Newport
- NPT** - Neath Port Talbot
- PMBRK** - Pembrokeshire (including Pembrokeshire Coast National Park)
- RDNR** - Radnorshire
- SNP** - Eryri National Park (Snowdonia)
- SWNS** - Swansea
- TRFN** - Torfaen
- VLFG** - Vale of Glamorgan
- WRXHM** - Wrexham
- YNSMN** - Anglesey

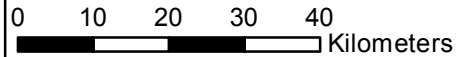


The single national dataset, for LANDMAP's Visual and Sensory areas, was created from a number of original assessments in different parts of Wales. This map shows these areas and the area codes used in survey records for each area.
Find out more about LANDMAP at www.naturalresources.wales/landmap

Legend

- LANDMAP assessment areas
- National Parks

1. Gwynedd
2. Conwy
3. Swansea
4. Neath Port Talbot
5. Bridgend / Caerphilly / Rhondda Cynan Taff
6. Vale of Glamorgan
7. Merthyr Tydfil
8. Cardiff
9. Blaenau Gwent
10. Torfaen
11. Newport
12. Monmouthshire



© Hawfraint a hawliau cronfa ddata'r Goron 2022.
Rhif Trwydded yr Arolwg Ordnans 100019741.
© Crown Copyright and database right 2022.
Ordnance Survey licence number 100019741.

